
SEE THE WORLD IN A NEW WAY
BUILDING SMART SOLUTIONS WITH MILESTONE MIP SDK
HIKVISION PARTNER ECOSYSTEM 2019
KEY PRODUCT COOPERATION PROPOSAL

Hikvision and Milestone Systems has a strong and long-standing partnership since 2008. As a Milestone Elite Camera Partner, Hikvision enjoys support for 1000+ products in the

Milestone XProtect® software. Milestone and Hikvision continue to show the ability to drive value and performance into the integrated solutions.

Users enjoy full support across the Milestone broad range of VMS solutions for Hikvision IP Cameras and special products. The deep MIP SDK integration unlocks the full potential of the Hikvision smart features in Milestone VMS, such as facial recognition, access control, video content analysis (VCA), automatic number plate recognition (ANPR), bounding boxes and metadata for a wide variety of use-case scenarios.

Based on recognized security technologies, the deep integration provides a solid environment to inject a high level of security into the video surveillance system.

ABOUT MILESTONE

Founded in 1998, Milestone Systems is a global industry leader in open platform IP video management software. The XProtect platform delivers powerful surveillance that is easy to manage, reliable and proven in thousands of customer installations around the world. With support for the widest choice in network hardware and integration with other systems, XProtect provides best-in-class solutions to video enable organizations – managing risks, protecting people and assets, optimizing processes and reducing costs. Milestone software is sold through authorized and certified partners.



HIKVISION MIP PLUGIN FAMILY



FACIAL RECOGNITION PLUGIN

Face Recognition plugin can realize face recognition and upload face alarm to Milestone software, search face via face picture, face attributes and show face comparison results in Milestone software.

KEY INTEGRATION FEATURES

- Facial recognition and real-time alarm
*Note: Facial recognition from both video streams and face images is only supported by the Edge Facial Recognition Server.
- Search database by face image and attributes
- 1v1 comparison



Facial Recognition & Real-time Alarm



Search Face by Image & Attributes

USER BENEFITS

- ✓ Fast and efficient forensic searches directly from within Milestone.
 - Quickly search for individuals across recorded video from within the Smart Client based on attributes and/or face picture
 - Upload picture from products to do one-on-one comparisons
- ✓ Instant alerting increases the situational awareness
 - Detect and recognize faces on the fly

- Display comparison to database for accuracy
- ✓ Cost-efficient deployment
 - Connect multiple DeepInView cameras or Facial Recognition servers with only minimal server load in Milestone
 - Only standard device licensing in Milestone. No additional licensing required

COMPATIBLE MILESTONE PRODUCTS



Note: version 2018 or above is recommended.

COMPATIBLE PRODUCTS

iDS-2CD842660/F-1

Facial Recognition Camera

- Face Detection & Capture
- Face Library
- Real-time Comparison and Alarm



** V5.4.2 or later version firmware*

iDS-IE6308/16/32/64-E/FA

Facial Recognition Standalone Server

- Facial Recognition
- Face Library
- Real-time Comparison and Alarm
- Face Retrieval
- 1v1 Comparison



** V1.1.4 or later version firmware*

DS-IE6316/32-EL/FA

Edge Facial Recognition Server

- Facial Recognition
- Face Library
- Real-time Comparison and Alarm
- Face Retrieval
- 1v1 Comparison



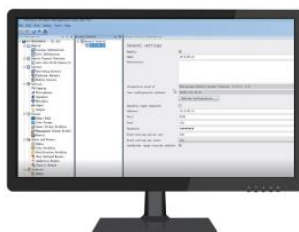
** V1.1.6 or later version firmware*

ACCESS CONTROL MIP PLUGIN

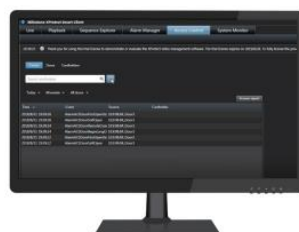
Access Control MIP Plugin is based on Milestone's XProtect Access interface and enables operators to display access control events & alarms, control doors on the XProtect® Smart Client.

KEY INTEGRATION FEATURES

- Preview access control events and event details
- Lock and unlock doors
- Manage cardholders and view cardholder details



HIK Access Control Plugin



Door Control Events

USER BENEFITS

- ✓ Centralized management in Milestone XProtect of Hikvision Access Control
 - Connect multiple Access Control points through Milestone Access
 - View and manage cardholder information

-
- ✓ Full awareness and control at the operator's fingertips
 - Instantly see access events with video
 - Lock and unlock doors remotely through the Smart Client

COMPATIBLE MILESTONE PRODUCTS



Note: version 2018 or above is recommended.

COMPATIBLE PRODUCTS

DS-K2601/02/04
K2600 Series Access Controller



DS-K2801/02/04
K2800 Series Access Controller



DS-K5603-Z
Face Recognition Terminal



iVMS-4200
Access Control System



Notes:

Hikvision Access Controller—Latest baseline
Hikvision Face Recognition Terminal—Latest baseline
Hikvision Customized iVMS-4200 Client Software—V2.6.8.50
(Access Control System)

ANPR MIP PLUGIN

The ANPR Plugin sends license plate data, vehicle color, vehicle type, speed etc... to the Milestone system, allowing the operator to search and identify vehicle license plates from live and recorded video in Smart Client. The operator can create black and white lists centrally in Milestone software and synchronize with one or more ANPR cameras. Alarms then pop up in real time in the Milestone alarm manager.

KEY FEATURES

- Manage multiple Hikvision ANPR cameras from the Milestone Management Client
- Central management of black/white lists
- Search for license plate, vehicle color, country, and time in Smart Client
- Receive events directly in XProtect Smart Client



License Plate Recognition



License Plate Alarm



B/W Match List Configuration

USER BENEFITS

- Fully integrated with Milestone
- No Milestone license required
- All edge-based recognition, no additional server CPU load
- Easy setup and centralized management

COMPATIBLE MILESTONE PRODUCTS



Note: version 2018 or above is recommended.

COMPATIBLE PRODUCTS

Traffic Cameras



iDS-2CD9371-IIS
iDS-2CD9131-IIS

* Note: Latest baseline firmware is supported.

ANPR Cameras



46 series
Wide angle models
DS-2CD4626FWD-IZ/P (2.8-12 mm)
DS-2CD4626FWD-IZHS/P (2.8-12 mm)

* Note: v5.4.5 baseline and later versions of firmware are supported.



40 series
Box model
DS-2CD4026FWD-A/P



4A series
Long focus models
DS-2CD4A26FWD-IZ/P (8-32 mm)
DS-2CD4A26FWD-IZS/P (8-32 mm)
DS-2CD4A26FWD-IZHS/P (8-32 mm)
DS-2CD4A26FWD-LZS/P (8-32 mm)

Wide angle models
DS-2CD4A26FWD-IZ/P (2.8-12 mm)
DS-2CD4A26FWD-IZS/P (2.8-12 mm)
DS-2CD4A26FWD-IZHS/P (2.8-12 mm)
DS-2CD4A26FWD-LZS/P (2.8-12 mm)



40 series with housing
Long focus models
DS-2CD4026FWD/P-IRA (11-40 mm)
DS-2CD4026FWD/P-INRA (11-40 mm)
DS-2CD4026FWD/P-L (7-33 mm)
DS-2CD4026FWD/P-L (11-40 mm)
DS-2CD4026FWD/P-HIRA (11-40 mm)

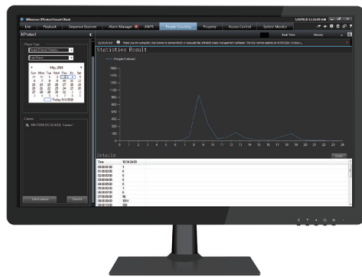
Wide angle models
DS-2CD4026FWD/P-IRS (3.8-16 mm)
DS-2CD4026FWD/P-L (3.8-16 mm)

PEOPLE COUNTING PLUGIN

People counting Plugin enables operator view real-time people counting data and search counting data in Milestone Smart client, which are suitable for intelligent retail markets.

KEY INTEGRATION FEATURES

- View real-time people counting info
- Search history people counting statistics



View Real-Time People Counting Information



Search History People Counting Statistics

COMPATIBLE MILESTONE PRODUCTS



Note: version 2018 or above is recommended.

COMPATIBLE PRODUCTS

iDS-2CD6810F/C

DUAL-LENS PEOPLE COUNTING CAMERA

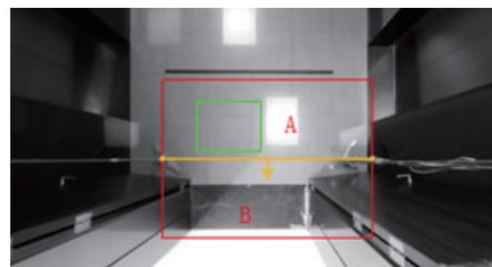
- 1/3" progressive Scan CMOS
- 2.0/2.8/4.0mm lens, optional
- 3D digital noise reduction
- DC 12V/PoE
- Resolution 640*480
- Black/White view



iDS-2CD6810F-IV/C

DUAL-LENS PEOPLE COUNTING CAMERA

- 1/3" progressive Scan CMOS
- 2.8/4.0mm lens, optional
- 3D digital noise reduction
- Support IR
- DC 12V/PoE
- Resolution 640*480
- Black/White view
- IP66



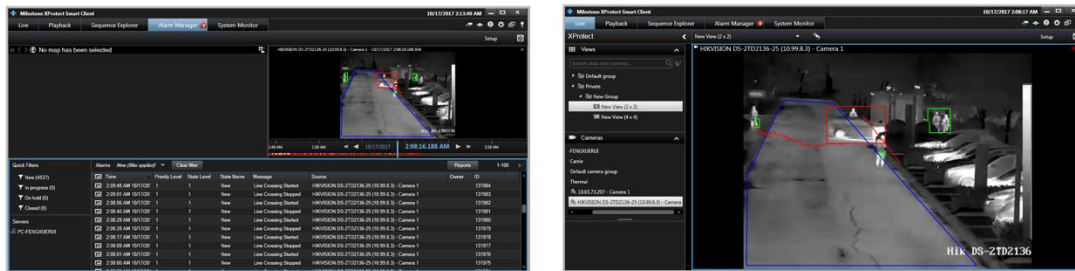
- Dual-lens 3D stereo analysis
- Entry/exit bi-directional counting
- Anti-interference to prevent inaccurate counting

On-board Analytics & Metadata PLUGIN

Video analytics plugin for Milestone XProtect® enables the operator to view bounding boxes in the XProtect® Smart Client and to receive alarms from the camera. Plugin installs on top of the Milestone software, and it is based on the Milestone SDK (MIP SDK).

KEY FEATURE

- ◆ **Video Analytics Alarm and Metadata**
- ✓ View **metadata** (bounding boxes, alarms, cross lines, zones) in the XProtect Smart Client
- ✓ Receive events from the camera into the Milestone event engine

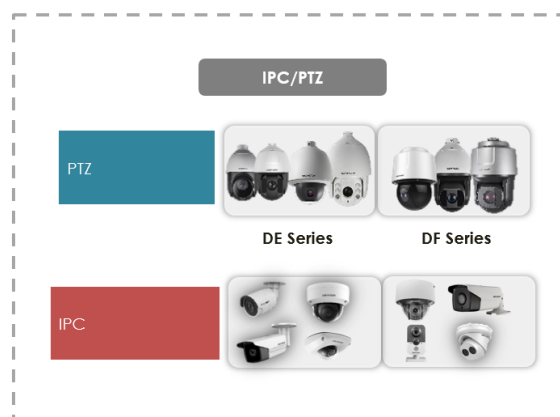
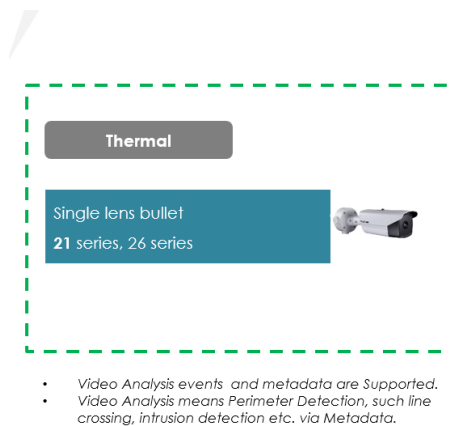


COMPATIBLE MILESTONE PRODUCTS



Note: version 2018 or above is recommended.

COMPATIBLE HIKVISION PRODUCTS



- Video Analysis events already supported,
- Metadata will be supported at October.

Notes:

Metadata function needs extra license from Milestone while on-board analytics doesn't.

Thermal IPC—v5.4.2 baseline or above

IPC/PTZ— V5.5.0 baseline or above.

Fisheye Dewarping Plugin

A dedicated MIP Plugin for Milestone provides dewarping support of Hikvision fisheye cameras in Milestone Smart Client. The plugin enables live view and playback of 180° and 360° streams without distortion, and the users can create multiple views, split views and ePTZ.



COMPATIBLE MILESTONE PRODUCTS



Note: version 2018 or above is recommended.

COMPATIBLE HIKVISION PRODUCTS



DS-2CD6332FWD-I(V)(S)
DS-2CD6362F-I(V)(S)
DS-2CD63C2F-I(V)(S)



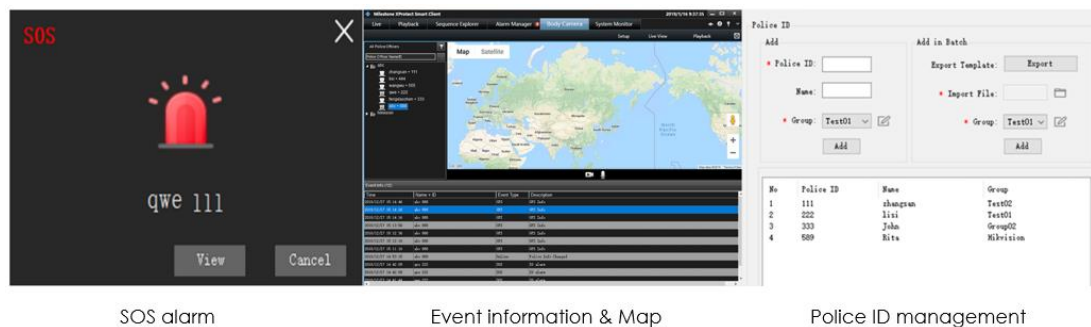
DS-2CD2935FWD-I(W)(S)
DS-2CD2955FWD-I(W)(S)

BODY CAMERA PLUGIN

Body camera plugin enables the police officers using body cameras to record their interactions with the public, collect video and audio evidence at crime scenes, and upload events and SOS alarms. You can manage police officers on Milestone XProtect Management Client, and perform remote law enforcement (such as starting live view of body cameras, starting two-way audio with the police officers, playing recorded video files, receiving uploaded events and alarms, etc.).

KEY FEATURES

- Live view & playback & Two way audio
- Police ID Management
- SOS alarm
- Map



USER BENEFITS

- Real time SOS alarm & map
- Lots of policemen share few cameras
- Save 4G data as footage will be acquired by dock then sent to Milestone

COMPATIBLE MILESTONE PRODUCTS



Note: version 2018 or above is recommended.

COMPATIBLE HIKVISION PRODUCTS



DS-MH2111 & DS-MH2211 & DS-MH2311
(All customized)

Dock station V2.0
or above

For more information, please access the following linkage or contact Hikvision:
<https://www.milestonesys.com/community/marketplace/start-exploring/?index=0&sortby=1&country=DK&phrase=hikvision>

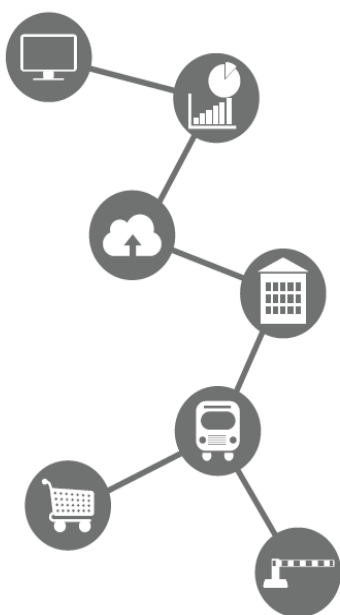
ECOSYSTEM PARTNERSHIP PROGRAM FOR TECHNOLOGY INTEGRATION PARTNERS **BUILD SMART SOLUTIONS WITH HIKVISION**

Join Hikvision's Integration Partner Program and open the door to a world of opportunities. With customers and support centers all over the world, Hikvision continually extends the reach of its innovative technologies.



We believe in strong partnerships and are eager to explore opportunities for collaboration, integration, and mutual success. If you specialize in any of these areas, consider venturing with Hikvision for exciting new possibilities:

- Video Management Software
- Physical Security Information Management
- Video Analytics
- Building Management
- Identification Systems and Access Control
- Systems Requiring Video Streams
- Alarm and Remote Guarding Systems
- Traffic & Transportation Systems
- Business Intelligence
- Parking Management
- Other Vertical Information Systems requiring Video Streams



When joining this partner program, you will enjoy access to a wealth of technical and commercial resources, and we ensure you're your solution enjoys strategic marketing through our communication channels. You will also get instant access to our entire sales organization. A vital part of our program is the streamlined online communication with our technical teams as well as the tools to plan the go-to-market activities.

HIKVISION PARTNER PORTAL

It is a value-sharing platform that we want to share our success with partners and to see partners' business ventures succeed in every way possible.

Authorized partners can access the Partner Portal online, anytime, for all kinds of helpful information.

(www.hikvision.com/ecosystem)